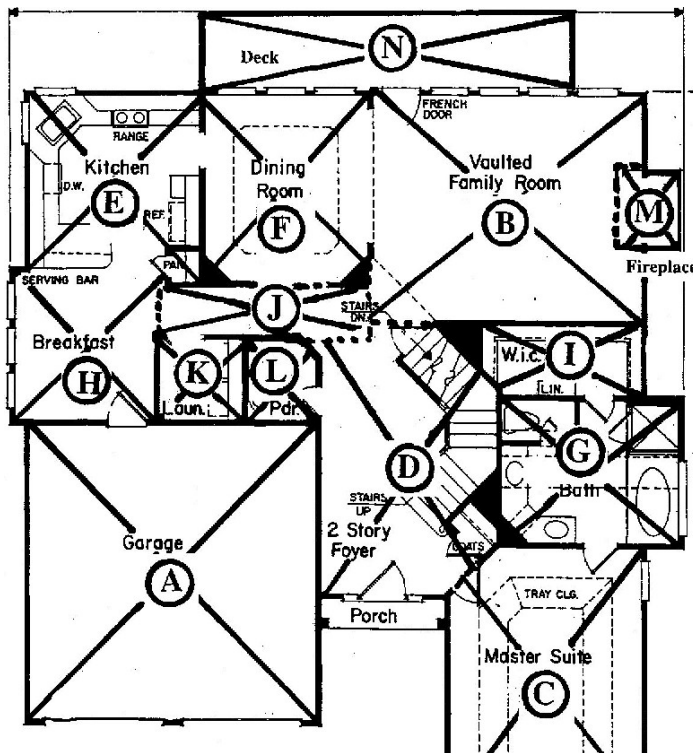


All rooms, spaces, and projections which comprise the total floor area of the project must be individually identified and calculated as follows:

- On each floor plan of existing built area place a large X completely across each individual space, both interior and exterior, including any space(s) to be removed.
- On each floor plan of proposed built area place a large X completely across each individual space, both interior and exterior.
- Sequentially label each separate space within all floor plans with an encircled capital letter placed at the center of the X. Use each letter of the alphabet only once (then use AA, BB, etc. if needed).
- Group the labeled areas and their corresponding square footages into a legend which subtotals the floor areas by floor plan, such as "first floor-existing", second floor- proposed", and so on. List any space to be removed by subtracting it from the appropriate subtotal. Sum all net subtotals into a grand total. (Note: these figures may not necessarily match the figures entered on or produced by the Residential Design Review Worksheet due to special formulas used on the worksheet.)



**FLOOR AREA:**

**Existing, 1<sup>st</sup> Floor:**

- A = 550
- B = 323
- C = 270
- D = 305
- E = 220
- F = 210
- G = 212
- H = 200
- I = 180
- J = 85
- K = 60
- L = 40
- M = 35
- N = 280

**Total = 2,970 SF**

**Proposed, 2<sup>nd</sup> Floor:**

- O = 217
- P = 103
- Q = 359

**Total = 679 SF**

**Total Floor Area (First & Second Floors) = 3,649 SF**