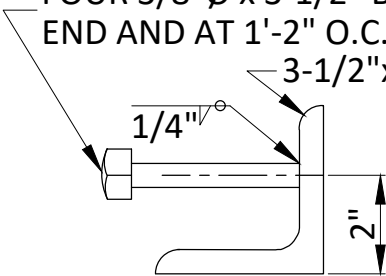
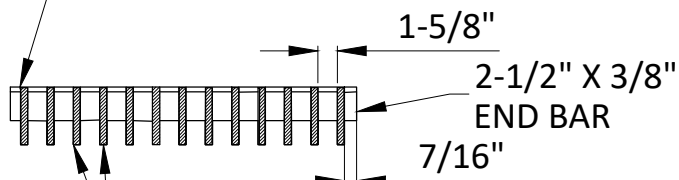


FOUR 3/8"Ø x 3-1/2" BOLTS, 3" FROM EACH
END AND AT 1'-2" O.C. ALONG ANGLE
3-1/2"x 3-1/2"x 1/2"x 4' LONG



CURB OPENING ANGLE

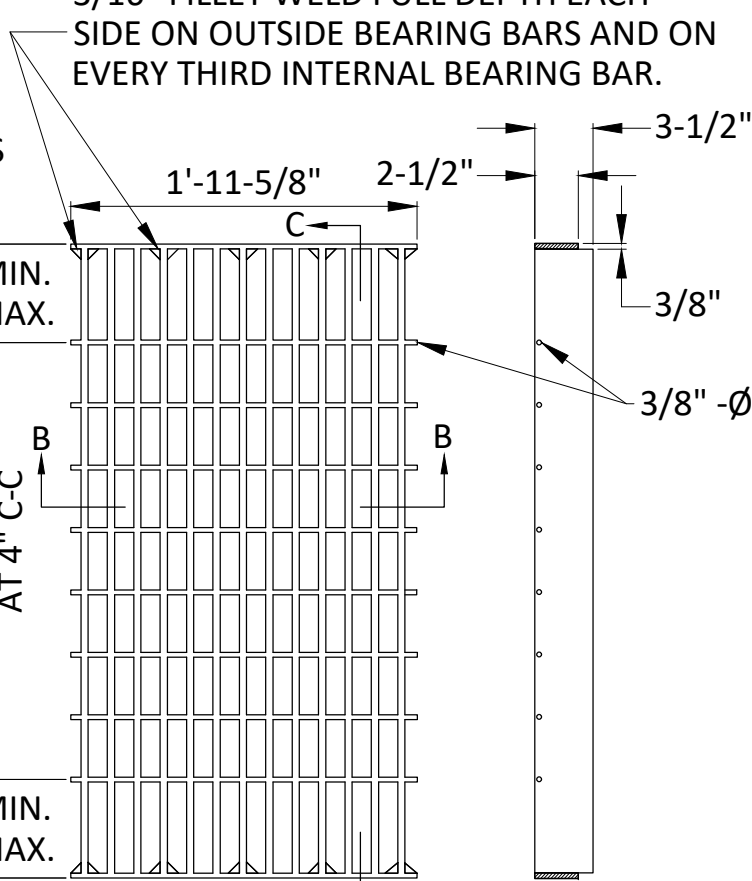
CROSS BARS SHALL BE 3/8" DIAMETER
AND SHALL BE ELECTROFORGED OR
RESISTANCE WELDED TO BEARING BARS.



BEARING BARS SHALL BE 3-1/2"x1/4"
BARS ON 1-7/8" CENTERS

SECTION B-B

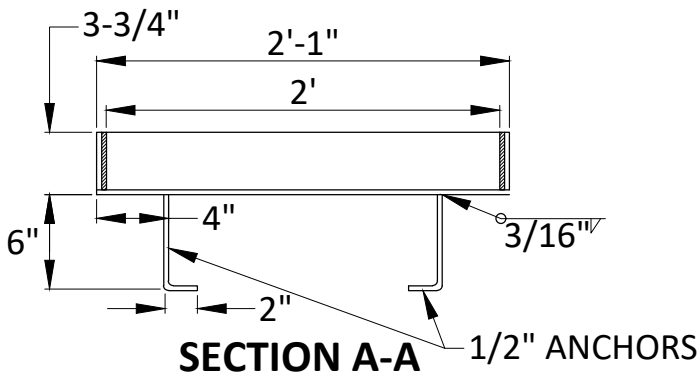
3/16" FILLET WELD FULL DEPTH EACH
SIDE ON OUTSIDE BEARING BARS AND ON
EVERY THIRD INTERNAL BEARING BAR.



GRATE

SECTION C-C

SECTION A-A



FRAME

NOTES:

1. FRAME, GRATE AND ANCHOR SHALL BE HOT DIP GALVANIZED AFTER FABRICATION.
2. CALTRANS TYPE 24-10S GRATE (RETICULINE TYPE) MAY BE SUBSTITUTED WITH PERMISSION OF THE CITY ENGINEER.

CITY OF MILLBRAE * STANDARD PLANS

STORM WATER INLET FRAME AND GRATE

APPROVED

City Engineer

NO.	REVISIONS	DATE

DRAWN	CK	CHECKED	NT
-------	----	---------	----

DATE	03/2024
------	---------

SCALE	NTS
-------	-----

SHEET	1 OF 1
-------	--------

DWG. NO.	D-1
----------	------------